

## Texapel presentation

First of all, I would like to introduce mill Texapel.

The company is on the market for 50 years and its production has been always wool and RWS Wool fabrics.

In the 80's mill has invented the Spinning-Less Production system directly weaving the wool tops into the modified circular machines. This process allows to have 30% less carbon footprint compared to similar woven fabrics!

The range of the qualities has been always sherpa , terry, Melton , Needle Punch finish etc. mostly for the fashion industry.

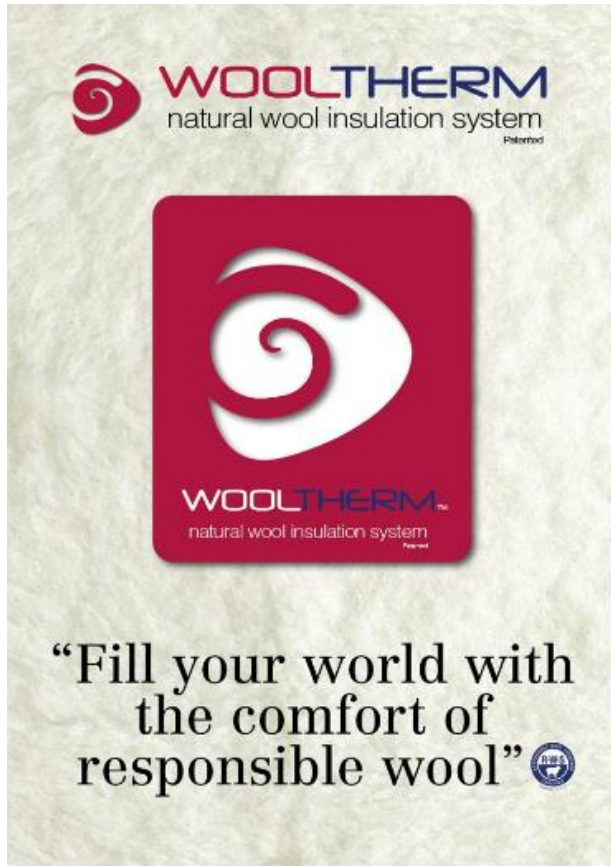
## Active Leisure Wool collection



In the last years Texapel modified most of these fabrics for the outdoor industry offering RWS wool fabrics with special finishing like wind stop membrane and rain proof membranes, three layers bonding etc. To be able to satisfy customer customization requirements.

All machines are jacquard so we can develop patterns plaids like any kind of logos or figures.

## WoolTherm (patented)



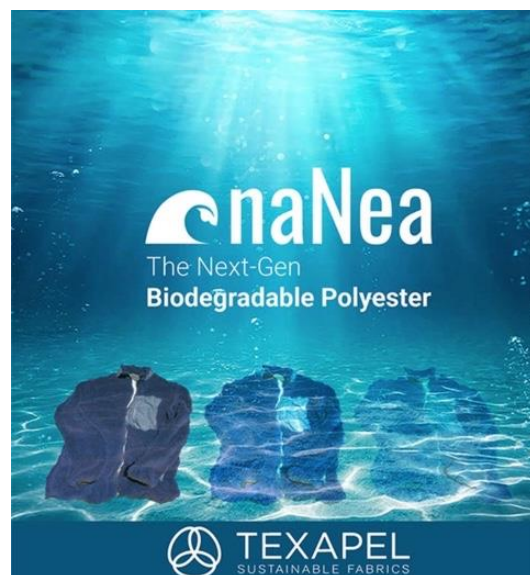
This is the new offer for a RWS WOOL insulation padding system, it is not a felt but it is a woven effect, we are using wool fibers with an interlacing GRS Polyester or naNea fiber that will keep the puff of the fibers vertical with a successful and more durable sponge elasticity also during the easy cares washing.

## Fibers :

We are working with RWS New Zealand wools only. GRS Polyester and recently we are introducing into our range naNea fibers from Oceansafe:

*"Natural wool blended with naNea, OceanSafe's **next-gen biodegradable polyester**. naNea is the world's first and only textile material which has achieved the status Cradle to Cradle Certified® Gold, affirming its alignment with the **principles of the circular economy**. naNea emits no persistent microplastics. It is confirmed to **be non-eco-toxic and renders biodegradability in the open environment**. Most importantly, its biodegradation process is **not powered by additive technology**. Additionally, naNea is **recyclable along with PET waste streams**."*

**This is one of the first Biodegradable Sherpa Fabrics Collection introduced both at the Performance Days at Ispo 2024 fairs.**



I am going to attach some of the pictures of our boards for your better understanding. Then I would love to send you some of the swatches for your review and comments.

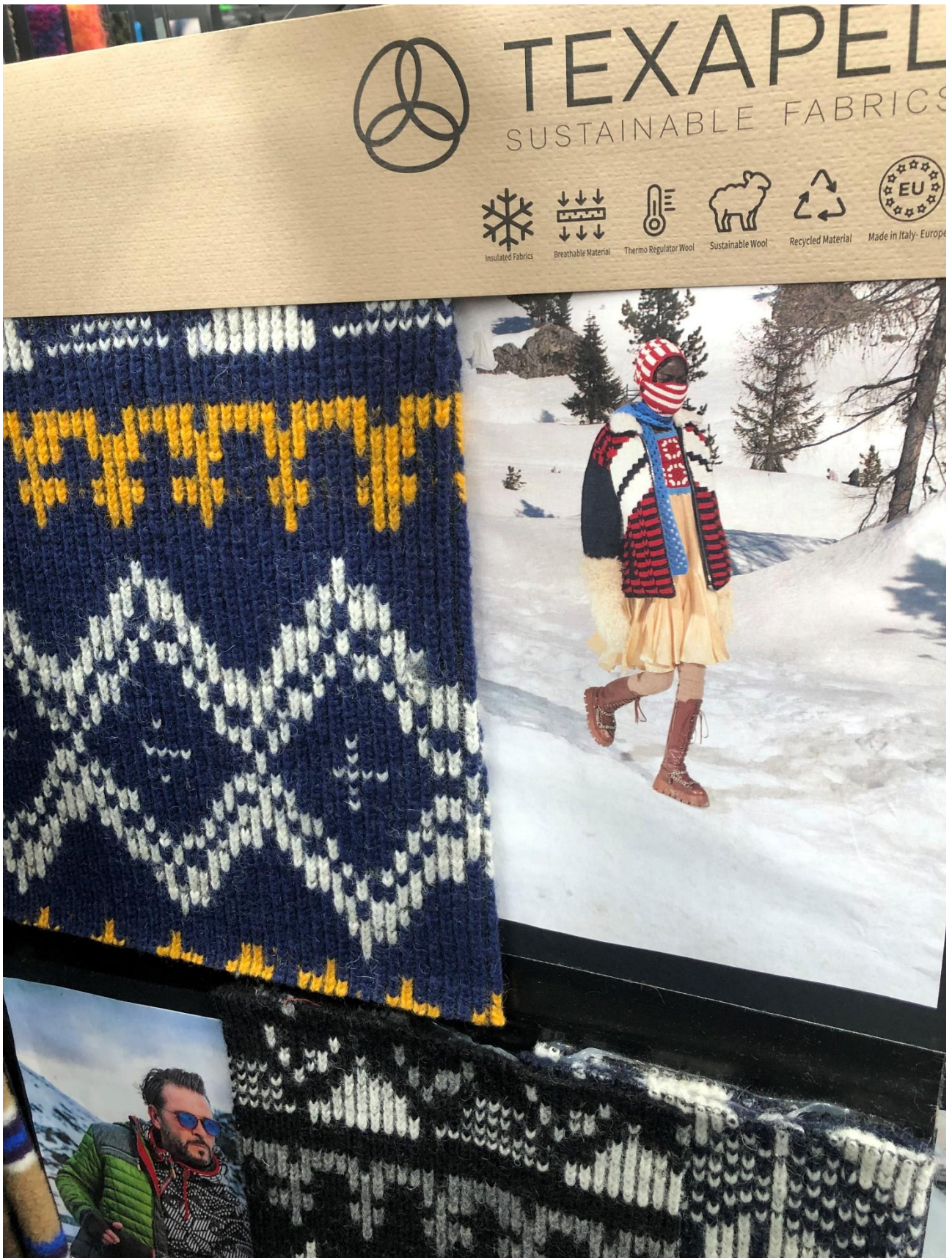
Br

Massimo Cecchi















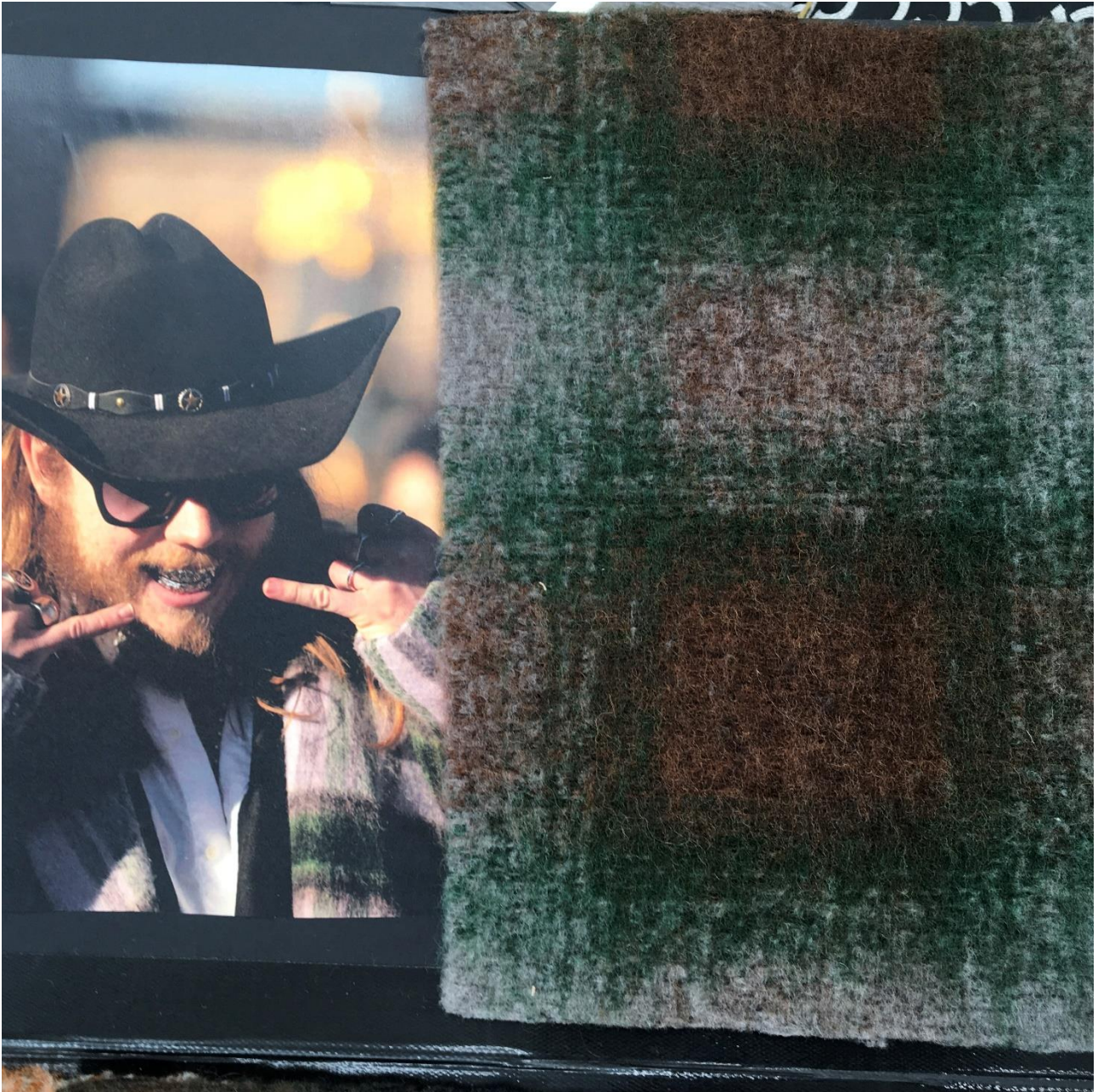


























This padding fabric can be also fancied and designed so that with a transparent layer you can be able to create interesting effects!

This can be also membrane bonded for higher performances!

